

Clamps, Grabs & Tongs



The Caldwell Group • 800-628-4263 • www.caldwellinc.com

Rig-Master® Section
2011-2013 Master Catalog

Model F - Beam Grabs

IN-STOCK PROGRAM



PRODUCT FEATURES:

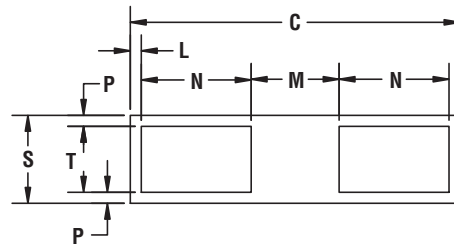
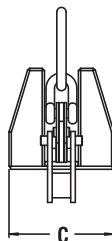
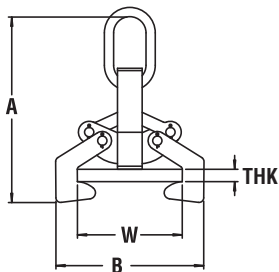
- Heavy duty design.
- These grabs provide an efficient method for handling wide flange beam sections and plate girders.
- Clamps have a recessed base to accept studs welded to a beam's surface.
- Beam grabs eliminate the need for slings or chokers.
- Use only for vertical lifting.
- For longer beams or girders, use units in pairs in conjunction with a spreader/lifting beam.
- Complies with ASME standards.

SPECIFICATIONS

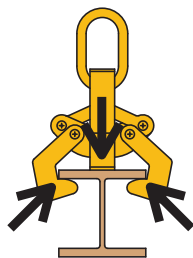
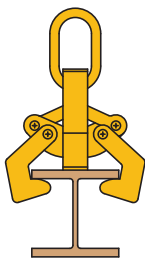
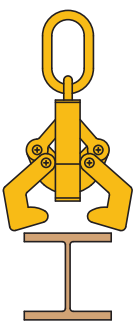
Base Dimensions

Models have bases cut out to avoid interference of studs.

Model Number	Rated Capacity (tons)	Dimensions (inches)												Weight (lbs.)
		A	B	C	Flange Width (W)	Flange Thickness (THK)		S	N	T	M	L	P	
						Min.	Max.							
F-5	5	22.70	15.70	11.60	4	.25	.25	3	3	2	4.60	.50	.50	68
					5	.25	.38							
					6 - 10	.25	1							
F-15	15	30.10	25.10	17.50	7	.50	.75	4	4	2.50	7.30	.90	.80	182
					8	.50	1							
					9	.50	1.25							
					10	.50	1.25							
					11 - 17	.25	2							
F-25	25	44.80	45.20	24.50	16 - 17	1.25	3	5.50	6	4	9.80	1.30	.80	541
					18 - 24	1	3							
F-35	35	52.90	61.60	28.50	16 - 18	2.25	4	6	9.30	4.50	8.50	.80	.80	841
					20 - 22	2	4							
					24	1.75	4							
					26	1.75	4							
					28 - 36	1	4							



Operation



Lower grab onto the beam and, if necessary, lift tong arms to allow them to slide under flanges of the beam. When the clamp is lifted, its center plate and gripping tongs work against each other... the heavier the beam, the greater the clamping pressure.

WARNING
Use only for vertical lifting.