

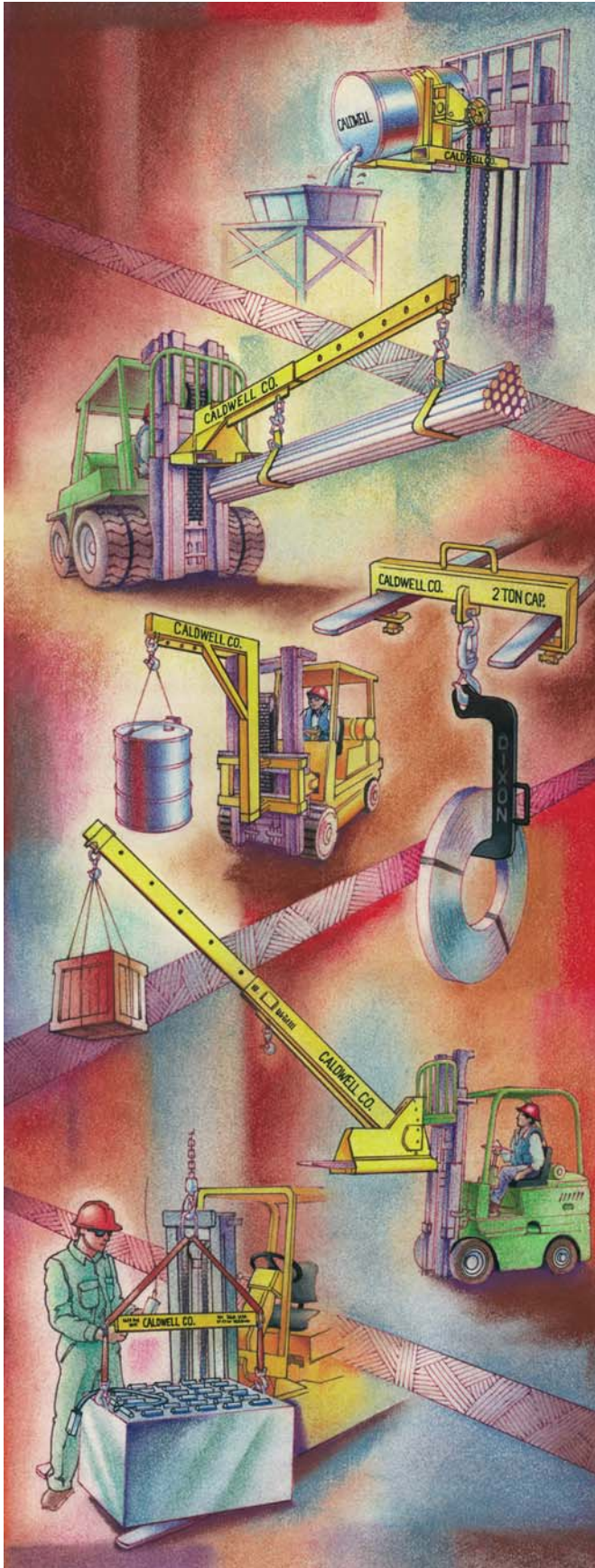
LIF-TRUC™

Fork Lift Truck Attachments



The Caldwell Group • 800-628-4263 • www.caldwellinc.com

**Lif-Truc™ Section
2011-2013 Master Catalog**



Booms

Pages G.4 - G.10



Drum Handling

Pages G.11 - G.13



Fork Beams

Pages G.14 - G.15



Rams & Extensions

Pages G.16 - G.17



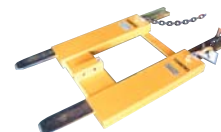
Battery Lifting Beams

Pages G.18 - G.19



Special Application

Pages G.20 - G.24



Quality & EngineeringG.3

Telescoping BoomsG.4

Pivoting BoomsG.5

Fixed BoomsG.6

Extended BoomsG.7

Precision Lifting BoomG.8 - G.9

Reach Over BoomsG.10

Carriage Jib BoomG.10

Drum Handling SlingsG.11

Fork Lift Drum Rotators and DumpersG.12

Steel Drum GrippersG.13

Single Fork/Hook FixtureG.14

Double Fork/Single Hook BeamG.15

Double Fork/Hook BeamG.15

Rug Lifting RamsG.16

Fork ExtensionsG.17

Fork CoversG.17

Battery Lifting BeamsG.18 - G.19

Trailer SpotterG.20

Heavy Duty Tow BarG.21

Multiple Pipe LifterG.22

Porta-PlatformG.23

Pallet PullerG.23

Application EvaluationG.24

Care & UseG.25

Booms

G.4 - G.10



Drum Handling

G.11 - G.13



Fork Beams

G.14 - G.15



Rams & Extensions

G.16 - G.17



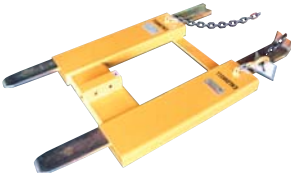
Battery Lifting Beams

G.18 - G.19



Special Applications

G.20 - G.24



Quality & Engineering



The Caldwell Group • 800-628-4263 • www.caldwellinc.com

Lif-Truc™ Section
2011-2013 Master Catalog

The Caldwell Group has been manufacturing lifting equipment since 1954. It is our goal to manufacture high quality, long lasting lifting products that will safely increase productivity and reduce operating costs.

Both OSHA and ANST/ITSDF indicate modifications and additions to a fork truck require prior written approval from the original fork truck manufacturer.

OSHA 1910.178(a)(4) states “Modifications and additions which affect capacity and safe operation shall not be performed by the customer or user without manufacturers prior written approval. Capacity, operations, and maintenance instruction plates, tags, or decals shall be changed accordingly.”

ANSI/ITSDF B56.10-2006 4.2.1 states “no modification or alterations to a powered industrial truck that may affect the capacity, stability or safe operation of the truck, shall be made without the prior written approval of the original truck manufacturer or its successor thereof. When the truck manufacturer or its successor approves a modification or alteration, appropriate changes shall be made to capacity plates, decals, tags, and operations and maintenance manuals.”

ANSI/ITSDF B56.10-2006, Part III, 7.4.5 - The attachment manufacturer shall install a durable, corrosion resistant nameplate, with the following information legibly and permanently inscribed:

- Model designation
- Serial Number
- Maximum hydraulic pressure (on hydraulically actuated attachments)
- Weight (value to be accurate +/-5%)
- Capacity
- The following instruction (or equivalent): Capacity of truck and attachment combination may be less than capacity shown on attachment. Consult truck nameplate.

Caldwell Delivery Programs

The Caldwell Group offers two quick delivery programs, INSTOCK and QUICKSHIP.

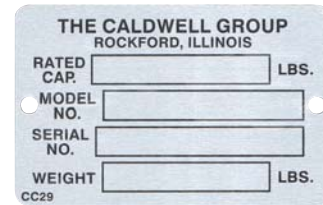


Look for the **green INSTOCK** logo on our standard products. The specific **INSTOCK** model number is shown in **green**. **INSTOCK** products ship in 48 hours.*

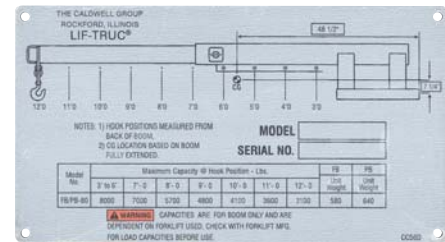


Look for the **red QUICKSHIP** logo on our standard products. The specific **QUICKSHIP** model number is shown in **red**. **QUICKSHIP** products ship in 7 to 10 days.*

* Excluding weekends and holidays.



I.D. Nameplate



Product Safety Labels



DISCLAIMER:

All product designs are subject to change without notice. Products pictured in this catalog are a representation of a specific design. The product you purchase will be designed for your specific application and may not look exactly like the picture in this catalog.

Booms



The Caldwell Group • 800-628-4263 • www.caldwellinc.com

Lif-Truc™ Section
2011-2013 Master Catalog

Model FB - Telescopic Fork Lift Booms

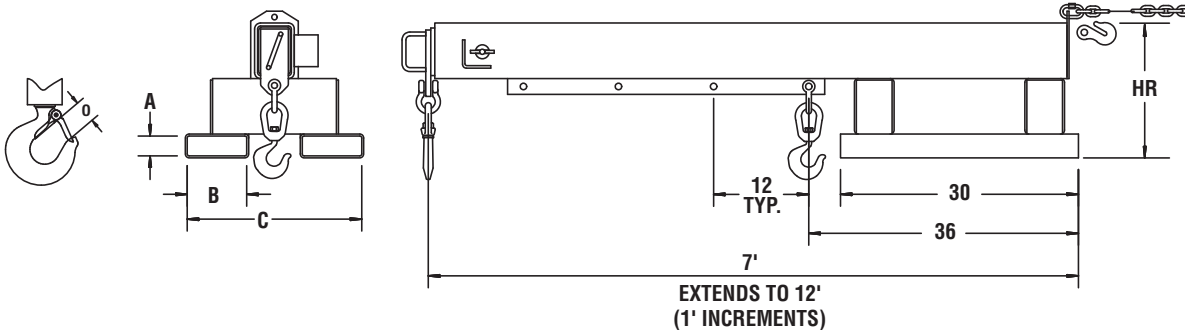
The Fixed Length Boom, Model FB, has a telescoping boom with a maximum horizontal reach of 12 feet. This model is available in 3,000, 4,000, 6,000 and 8,000 lb. capacities.

PRODUCT FEATURES:

- Alternate hook positions.
- Telescoping boom.
- Restraining chain with grab hook.
- Handle at end for easy extension.
- Fixed or swivel hooks available.
- Boom locking t-pin.



Model FB
Fixed Type Fork Lift Boom



NOTE: All dimensions on drawings shown in inches unless stated.

SPECIFICATIONS

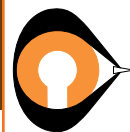
Model Number	Dimensions (in.)					Maximum Capacity @ Hook Position (lbs.)							Weight (lbs.)
	A	B	C	HR	O	3'-6'	7'	8'	9'	10'	11'	12'	
FB-30	2-1/2	7-1/2	22	16	1.00	3000	3000	2600	2200	1900	1600	1500	340
FB-40				16	1.09	4000	3200	2600	2200	1900	1600	1500	340
FB-60				17	1.36	6000	5000	4200	3500	3000	2700	2500	390
FB-80				18	1.61	8000	7000	5700	4800	4100	3600	3100	520

NOTE: Models FB-30 and FB-40 are only available with swivel hooks.

WARNING

Capacity of lift truck and attachment combination may be less than capacity shown on attachment. Consult lift truck manufacturer.

Booms



The Caldwell Group • 800-628-4263 • www.caldwellinc.com

Lit-Truc™ Section
2011-2013 Master Catalog

Model PB - Telescopic Pivoting Fork Lift Booms

The Pivot Boom, Model PB, has a telescoping boom with a maximum horizontal reach of 12 feet. This model is available in 3,000, 4,000, 6,000 and 8,000 lb. capacities. The versatile Model PB is adjustable vertically in five increments up to a maximum of 40 degrees.

PRODUCT FEATURES:

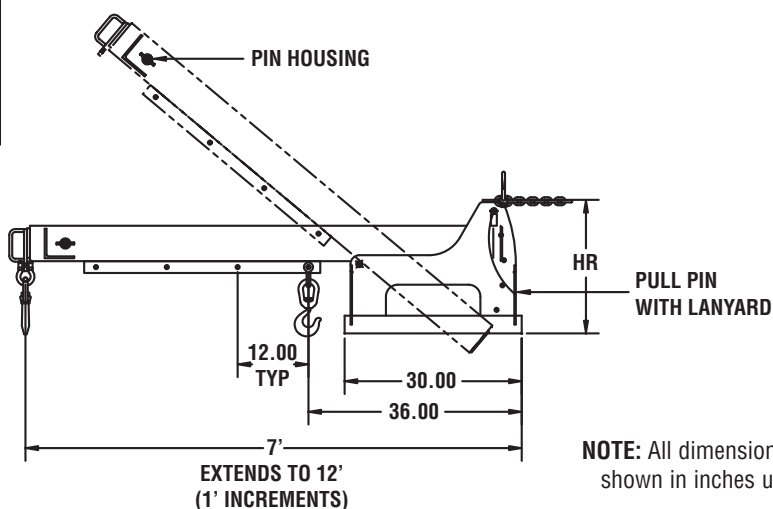
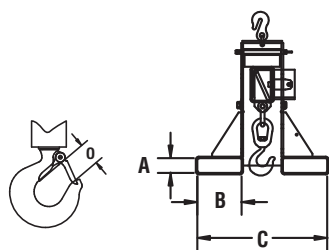
- Alternate hook positions.
- Telescoping boom.
- Restraining chain with grab hook.
- Boom locking t-pin.
- Handle at end for easy extension.
- Fixed or swivel hooks available.
- Vertically pivoting boom to 6'-4" height.



Model PB
Pivot Type Fork Lift Boom

WARNING

Capacity of lift truck and attachment combination may be less than capacity shown on attachment. Consult lift truck manufacturer.



NOTE: All dimensions on drawings shown in inches unless stated.

SPECIFICATIONS

Model Number	Dimensions (in.)					Maximum Capacity @ Hook Position (lbs.)							Weight (lbs.)
	A	B	C	HR	O	3'-6'	7'	8'	9'	10'	11'	12'	
PB-30	2-1/2	7-1/2	22-1/2	22-5/8	1.00	3000	3000	2600	2200	1900	1600	1500	350
PB-40					1.09	4000	3200	2600	2200	1900	1600	1500	350
PB-60	2-1/2	7-1/2	22-1/2	22-5/8	1.36	6000	5000	4200	3500	3000	2700	2500	420
PB-80					1.61	8000	7000	5700	4800	4100	3600	3100	540

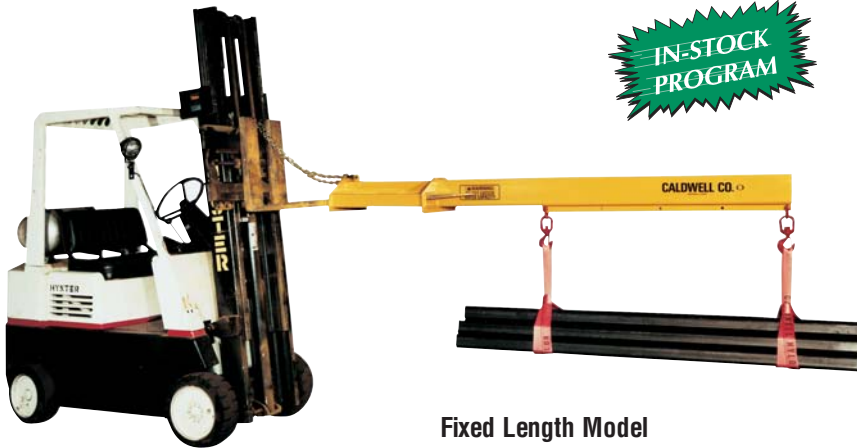
NOTE: Models PB-30 and PB-40 are only available with swivel hooks.

Booms

Model EB - Fixed Length Fork Lift Booms

Use the efficient, economical Fixed Length Boom attachment when telescoping is not required.

**IN-STOCK
PROGRAM**



Fixed Length Model
EB-40 Shown

PRODUCT FEATURES:

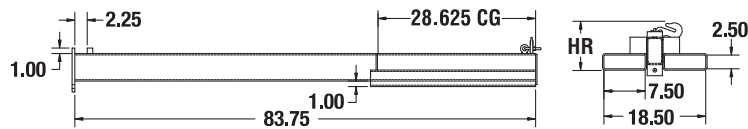
- Fixed length.
- Restraining chain with grab hook.

EB-15 - Lightweight

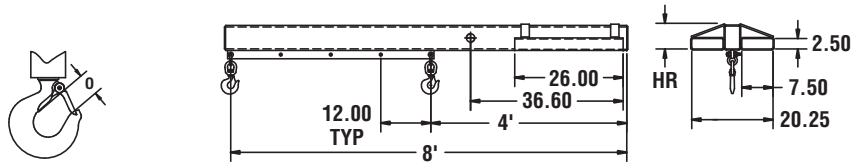
- Accepts up to a 2" wide sling.
- Optional swivel hook available.

EB-40 - Fixed Length

- 5 alternate hook positions.
- Fixed or swivel hooks available.



EB-15



EB-40

NOTE: All dimensions on drawings shown in inches unless stated.

SPECIFICATIONS

Model Number	Maximum Capacity (lbs.)	Headroom HR (in.)	Hook Opening O (in.)	Maximum Capacity @ Hook Position - (lbs.)					Weight (lbs.)
				4'	5'	6'	7'	8'	
EB-15	1500	7.00	1.00	-	-	-	-	-	185
EB-40	4000	6.30	1.09	4000	3500	3000	2500	2000	240

WARNING

Capacity of lift truck and attachment combination may be less than capacity shown on attachment. Consult lift truck manufacturer.



The Caldwell Group • 800-628-4263 • www.caldwellinc.com

Lif-Truc™ Section
2011-2013 Master Catalog

Booms



The Caldwell Group • 800-628-4263 • www.caldwellinc.com

Lit-Truc™ Section
2011-2013 Master Catalog

Model EFB - Extended Fork Lift Boom

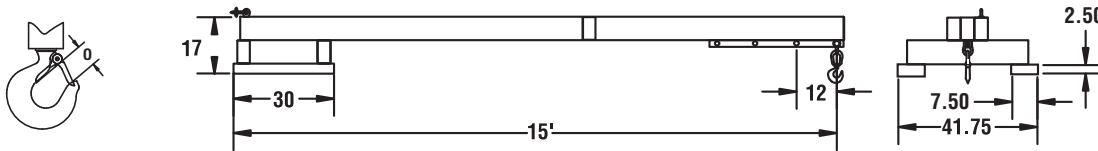
Get the Extra Reach You Need with our Extended Fork Lift Boom

Use specifically for use with off-road fork trucks. This fork boom has four different hook positions on 12 inch increments from 12 to 15 feet. Low profile design is easy to store.



PRODUCT FEATURES:

- 12' to 15' hook position.
- Extra wide fork pockets.
- Restraining chain with grab hook standard.



NOTE: All dimensions on drawings shown in inches unless stated.

SPECIFICATIONS

Model Number	Maximum Capacity @ Hook Position - (lbs.)				Hook Opening 0 (in.)	Weight (lbs.)
	12'	13'	14'	15'		
EFB-25	2500	2300	2100	2000	1.00	665

WARNING

Capacity of lift truck and attachment combination may be less than capacity shown on attachment. Consult lift truck manufacturer.

Booms

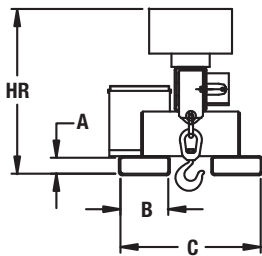
Precision Lifting Boom

Quickly turns your fork lift into a portable crane.

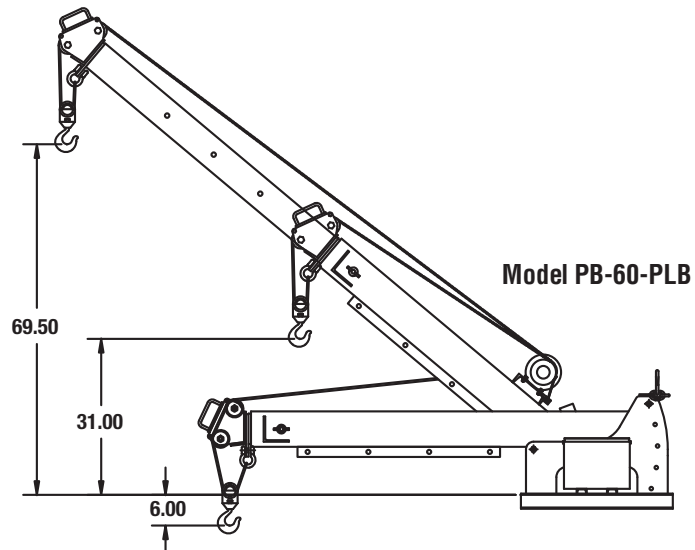
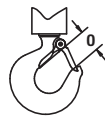


PRODUCT FEATURES:

- Portable, compact and versatile lifting.
- Fits standard fork lift truck.
- Hook travels approximately 20'.
- Adjusts both horizontally and vertically.
- Restraining chain with grab hooks.
- Completely self contained 12Volt DC power supply.
- 100 AMP Hour Battery with charger.
- Easy to use toggle button control with standard 12' cord.
- Hoist hook speed averages 7.5 FPM.



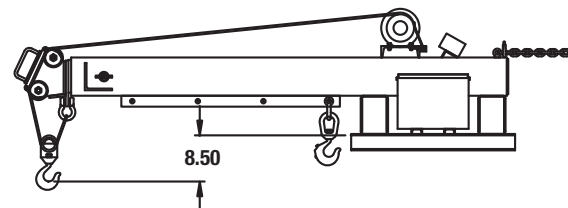
Fork Pocket Configuration
All Models



Model PB-60-PLB



Model FB-60-PLB



SPECIFICATIONS

Model Number	Dimensions (in.)					Maximum Capacity (lbs.)		Weight (lbs.)
	A	B	C	HR	O	Boom Hook 3'-6'	Lifting Hook 7'-12'	
PB-60-PLB	2.50	7.50	22.50	28.25	1.36	6000	2400	620
FB-60-PLB	2.50	7.50	22.50	26.00	1.36	6000	2400	590



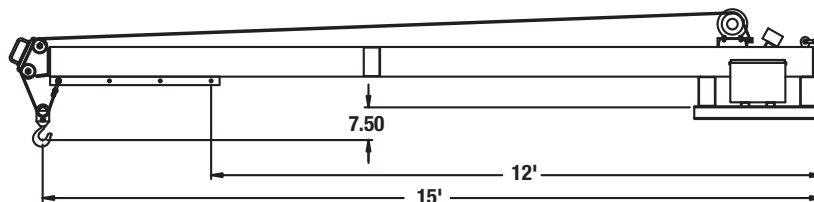
The Caldwell Group • 800-628-4263 • www.caldwellinc.com

Lif-Truc™ Section
2011-2013 Master Catalog

Precision Lifting Boom

Quickly turns your fork lift into a portable crane.

Model EFB-25-PLB



SPECIFICATIONS

Model Number	Dimensions (in.)					Maximum Capacity (lbs.)				Weight (lbs.)
	A	B	C	HR	O	Boom Hook			Lifting Hook	
						12'	13'	14'	15'	
EFB-25-PLB	2.50	7.50	41.75	26.00	1.00	2500	2300	2100	2000	865

NOTE: All dimensions on drawings shown in inches unless stated.

WARNING

Capacity of lift truck and attachment combination may be less than capacity shown on attachment. Consult lift truck manufacturer.

Operation



Real Time Tests

Starting with a fully charged battery, the Precision lifting Boom lifts and lowers a 1,000-pound load from an eight-foot steel pit forty times. The battery charges in four to five hours with the supplied charger.

Booms



The Caldwell Group • 800-628-4263 • www.caldwellinc.com

Lif-Truc™ Section
2011-2013 Master Catalog

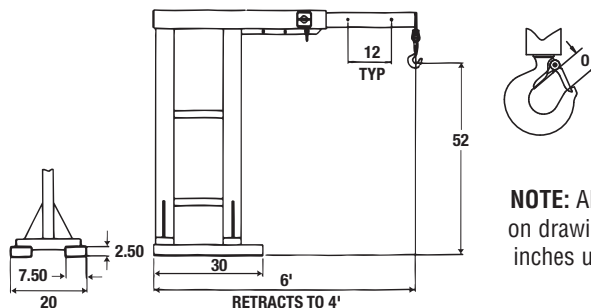
Model ROB - Reach Over Fork Lift Boom

Use the Reach Over Boom when an extension boom is required and clearance is a factor.



PRODUCT FEATURES:

- Multiple hook positions.
- Telescoping boom.
- Restraining chain with grab hook.
- Swivel hooks with hook latches.



NOTE: All dimensions on drawings shown in inches unless stated.

SPECIFICATIONS

Model Number	Maximum Capacity (lbs.)	Hook Opening O (in.)	Weight (lbs.)
ROB-40	4000	1.09	470
Capacity At Hook Position (lbs.)			
4'	4000		
5'	3500		
6'	1800		

WARNING

Capacity of lift truck and attachment combination may be less than capacity shown on attachment. Consult lift truck manufacturer.

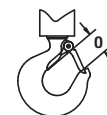
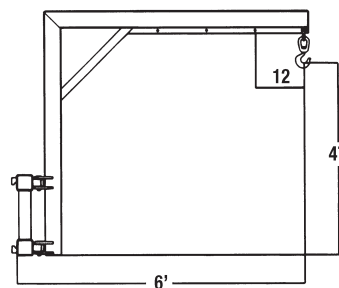
Model FCJ - Carriage Jib Fork Lift Boom

Use the Carriage Jib Boom attachment when fork obstruction is undesirable.



PRODUCT FEATURES:

- Horizontally adjusting, 15° left or right of center, pivot boom.
- Designed for ITA Class II fork carriages.
- Multiple hook positions.
- Swivel hooks with hook latches.

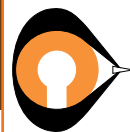


NOTE: All dimensions on drawings shown in inches unless stated.

SPECIFICATIONS

Model Number	Maximum Capacity (lbs.)	Hook Opening O (in.)	Weight (lbs.)
FCJ-40	4000	1.09	310
Capacity At Hook Position (lbs.)			
3'	4000		
4'	3000		
5'	2300		
6'	1800		

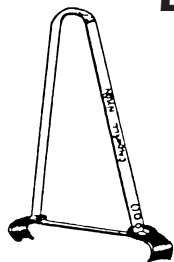
Drum Handling



The Caldwell Group • 800-628-4263 • www.caldwellinc.com

**Lit-Truc™ Section
2011-2013 Master Catalog**

Drum Handling Slings



Versatile Drum Handling Sling

This sling allows for easy handling of various sizes of steel drums and barrels, and has a 1,000 lb. capacity. It is light in weight, high in strength, and is resistant to oil.

PRODUCT FEATURES:

- Lightweight - weighs only 4 lbs.
- Versatile - lifts drums either vertically or horizontally.
- Self-tightening grip - sliding drum hooks tighten grip on load as drum is lifted.
- Tough - resistant to alkalis, ultra violet rays, rot and mildew.



SPECIFICATIONS

Model Number	Rated Capacity (lbs.)	Drum Hook Width (in.)
1HB2-N x 3' or 5'	1000	2-7/8

NOTE: Use on metal drums only.



Type HB

Ratchet Type Drum Handling Sling

- Easily lift standing drums for transport.
- Tilt suspended drums to pour from open top or spigot.
- For use with ribbed steel drums, the ratcheting belly band tightens securely below the first rib.
- Standard wear pad for added protection.
- Ratchet tightens securely.
- Free end of ratchet strap sewn to stay properly threaded.
- Vertical legs sewn to belly band to maintain proper position.



SPECIFICATIONS

Model Number (specify diameter)	Rated Capacity (lbs.)	Drum Hook Width (in.)
DSV601	300	1
DSV602	850	2



Type DSV

Drum Handling

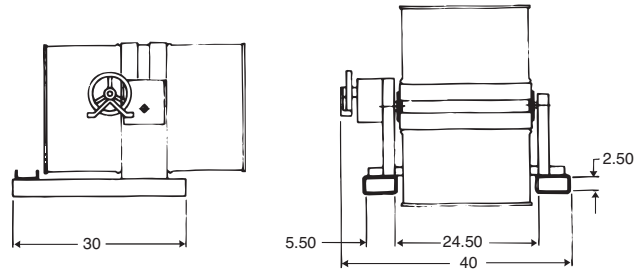


The Caldwell Group • 800-628-4263 • www.caldwellinc.com

Lif-Truc™ Section
2011-2013 Master Catalog

Model FDL - Fork Lift Drum Lifter/Rotator

The Caldwell Lifter/Rotator unit is designed for use with a lift truck in areas where an overhead hoist is not available. The drum is secured to the carrier above the level of the forks thus it may be used at the full height of the truck. With the chain wheel, the lift truck driver may rotate the drum from the cab of the truck (10' long drop chain). This unit will handle all standard 55 gallon metal drums.



NOTE: Dimensions shown in inches.

SPECIFICATIONS

Model Number	Rated Capacity (lbs.)		Weight (lbs.)
	Full Drum	Half Drum	
FDL-20-55	2000	1000	310

NOTE: The standard model FDL is for lifting drums containing free flowing liquids. Contact factory for drums containing other contents.

WARNING

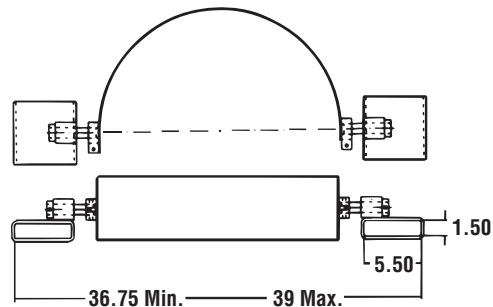
Capacity of lift truck and attachment combination may be less than capacity shown on attachment. Consult lift truck manufacturer.

Model FDD - Fork Lift Drum Lifter/Dumper

Designed to easily and economically lift, travel with, and dump drums into acceptable type containers. Pressure applied to the drum base against rim of container will tilt drum to preferred angle of emptying. Drum is secured to the lifter by a load binder. This unit will handle all standard 55 gallon metal drums.



QUICKSHIP PROGRAM



NOTE: Dimensions shown in inches.

SPECIFICATIONS

Model Number	Rated Capacity (lbs.)		Weight (lbs.)
	Full Drum	Half Drum	
FDD-10-55	1000	500	38

Drum Handling



The Caldwell Group • 800-628-4263 • www.caldwellinc.com

Lit-Truc™ Section
2011-2013 Master Catalog

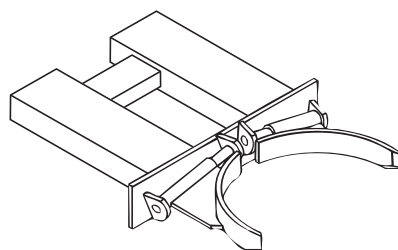
Model FG - Steel Drum Grippers



Single Drum Gripper

PRODUCT FEATURES:

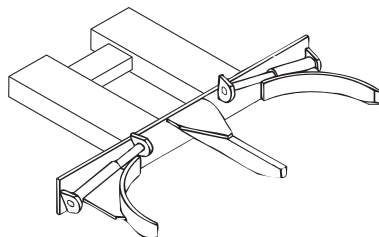
- High quality heavy duty construction.
- Restraining chain with grab hooks.
- Handles drums of 55 or 30 gallon capacities.
- Lift and release drums without leaving seat.
- Attaches to lift truck quickly and easily.
- Minimum maintenance required.
- Drums will not slip once clamped.
- Quick and easy drum release.



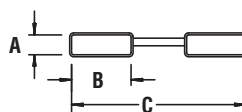
Single Drum Gripper



Double Drum Gripper



Double Drum Gripper



SPECIFICATIONS

Model Number	Drums	Drum Capacity Each (lbs.)	Steel Drum Diameter (in.)		Fork Pockets (in.)			Weight (lbs.)
			55 Gal.	30 Gal.	A	B	C	
FG-1	1	1500	22-3/4	18	2-1/2	7-1/2	23-1/2	230
FG-2	2	1500	22-3/4	18	2-1/2	7-1/2	23-1/2	320

WARNING

Capacity of lift truck and attachment combination may be less than capacity shown on attachment. Consult lift truck manufacturer.

Fork Beams

Models 5, 10 & 15 - Fork Lift Beams

Caldwell Fork Lift Beams are specifically designed to make fork lifts more versatile by providing positive handling of loads otherwise impractical for fork lifts.



PRODUCT FEATURES:

- Easy attachment, no special wrenches or tools needed.
- Strong, sturdy, all welded construction.
- Easy to see, highly visible yellow paint.
- Custom designs available.

IN-STOCK
PROGRAM

QUICKSHIP
PROGRAM

WARNING

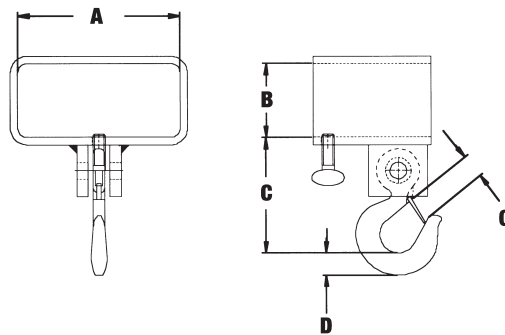
Capacity of lift truck and attachment combination may be less than capacity shown on attachment. Consult lift truck manufacturer.

Model 5 - Single Fork Hook - Fixed or Swivel



(Fixed hook shown)

(Swivel hook shown)



SPECIFICATIONS

Model Number Fixed	Model Number Swivel	Rated Capacity (lbs.)	Dimensions (in.)						Weight (lbs.)
			A	B	C Fixed	C Swivel	D	O	
5-1 1/2-4	5S-1 1/2-4	3000	4-1/2	2-1/2	4-11/16	6-9/16	1	1	7
5-1 1/2-5	5S-1 1/2-5	3000	5-1/2	2-1/2	4-11/16	6-9/16	1	1	8
5-1 1/2-6	5S-1 1/2-6	3000	6-1/2	2-1/2	4-11/16	6-9/16	1	1	9



The Caldwell Group • 800-628-4263 • www.caldwellinc.com

Lif-Truc™ Section
2011-2013 Master Catalog

Fork Beams



The Caldwell Group • 800-628-4263 • www.caldwellinc.com

Lift-Truc™ Section
2011-2013 Master Catalog

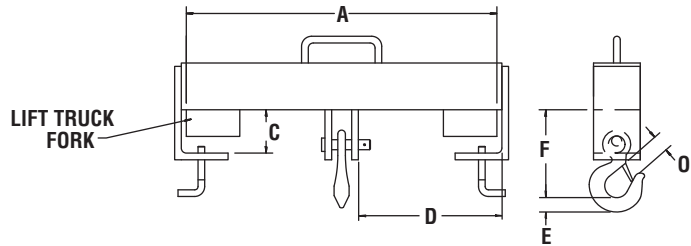
Model 10 - Single Hook Beam - Fixed or Swivel



Model 10S-2-20



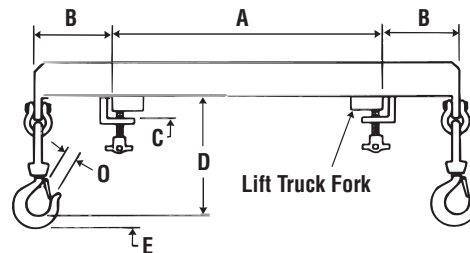
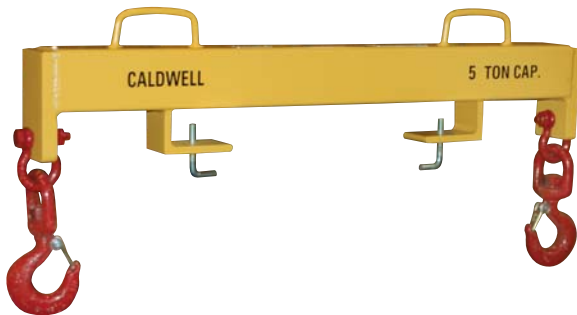
Model 10S-7.5-36



SPECIFICATIONS

Model Number Fixed	Model Number Swivel	Rated Capacity (lbs.)	Dimensions (in.)							Weight (lbs.)
			A	C	D	Fixed F	Swivel F	E	O	
10-2-20	10S-2-20	4000	20	3-1/4	9-1/8	7-1/4	8-7/8	1-1/8	1-5/32	21
10-5-24	10S-5-24	10000	24	3-1/4	10-3/4	9-1/4	11-7/16	1-13/16	1-11/16	42
10-5-36	10S-5-36	10000	36	3-1/4	16-3/4	9-1/4	11-7/16	1-13/16	1-11/16	80
10-7.5-36	10S-7.5-36	15000	36	4-1/4	16-1/4	13-3/4	15-3/4	2-1/4	2-7/32	166
10-10-36	10S-10-36	20000	36	4-1/4	16	14-5/8	16-7/16	2-19/32	2-13/32	180
10-15-36	10S-15-36	30000	36	4-1/4	15-7/8	14-1/2	16-5/16	2-19/32	2-13/32	210

Model 15 - Double Hook Beam - Swivel



SPECIFICATIONS

Model Number	Rated Capacity (lbs.)	Dimensions (in.)						Weight (lbs.)
		A	B	C	D	E	O	
15-2-20	4000	20	6-5/8	2-1/2	10-3/8	1-7/16	1-11/32	60
15-5-24	10000	24	9-3/8	2-1/2	11-21/32	1-7/16	1-11/32	68

Rams & Extensions



The Caldwell Group • 800-628-4263 • www.caldwellinc.com

Lif-Truc™ Section
2011-2013 Master Catalog

Model RLR - Rug Lifting Rams

**QUICKSHIP
PROGRAM**

PRODUCT FEATURES:

- Available for both Class II and Class III lift trucks.
- Carriage locking pin standard.
- Minimum lost load center.
- Pole made of alloy steel.
- Class II carriage, hanger and baseplate are 1 piece.
- Class III carriage, hanger and baseplate are welded.
- Standard and heavy duty designs available.
- Fork-mounted base unit available.

SPECIFICATIONS - Standard Duty

Model Number	Rated Capacity (lbs.) @72" Load Center	Carriage Class	Pole Length (ft.)	Pole Diameter (in.)	Weight (lbs.)
8B-90	1000	II	9	2-3/4	259
8B-100	1000	II	10	2-3/4	275
8B-110	1000	II	11	2-3/4	292
8B-120	1000	II	12	2-3/4	309
8G-90	1400	II	9	3	291
8G-100	1400	II	10	3	311
8G-110	1400	II	11	3	331
8G-120	1400	II	12	3	351
9B-90	1000	III	9	2-3/4	256
9B-100	1000	III	10	2-3/4	272
9B-110	1000	III	11	2-3/4	289
9B-120	1000	III	12	2-3/4	306

SPECIFICATIONS - Heavy Duty

Model Number	Rated Capacity (lbs.) @72" Load Center	Carriage Class	Pole Length (ft.)	Pole Diameter (in.)	Weight (lbs.)
8D-90	1800	II	9	3-1/4	329
8D-100	1800	II	10	3-1/4	353
8D-110	1800	II	11	3-1/4	377
8D-120	1800	II	12	3-1/4	401
8E-90	2900	II	9	3-3/4	410
8E-100	2900	II	10	3-3/4	443
8E-110	2900	II	11	3-3/4	476
8E-120	2900	II	12	3-3/4	509
8H-90	4300	II	9	4-1/4	505
8H-100	4300	II	10	4-1/4	547
8H-110	4300	II	11	4-1/4	590
8H-120	4300	II	12	4-1/4	633

SPECIFICATIONS - Fork Mounted

Model Number	Rated Capacity (lbs.) @72" Load Center	Overall Length (ft.)	Pole Length (ft.)	Pole Dia. (in.)	Fork Pocket Size (in.)	Fork Pocket Spacing (in.)	Weight (lbs.)
8F-90	1000	11	9	2-3/4	2-1/2 X 7-1/2	31	298
8F-100	1000	12	10	2-3/4	2-1/2 X 7-1/2	31	313
8F-110	1000	13	11	2-3/4	2-1/2 X 7-1/2	31	330
8F-120	1000	14	12	2-3/4	2-1/2 X 7-1/2	31	347



WARNING

Carrying capacity is only for the rug ram.
Maximum roll length is 12'



WARNING

Capacity of lift truck and attachment combination may be less than capacity shown on attachment. Consult lift truck manufacturer.

Rams & Extensions



The Caldwell Group • 800-628-4263 • www.caldwellinc.com

Lit-Truc™ Section
2011-2013 Master Catalog

Model FE - Fork Extensions

PRODUCT FEATURES:

- Ideal for oversized loads.
- Easy installation onto existing forks.
- Fits standard fork thicknesses.
- Standard fork extension widths 4" through 7".
- Standard fork extension lengths 42" through 96".



WARNING

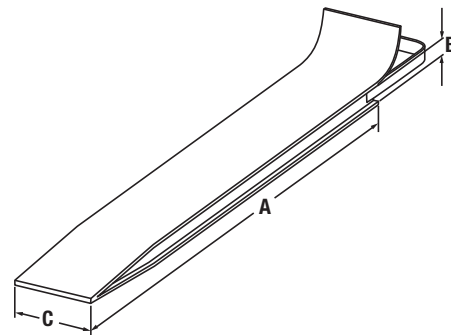
- Extensions shall not exceed 1 1/2X the length of the existing forks.
- Extension capacities are reduced beyond existing fork tips (Approx. 60%).
- Do not tip-load the fork extensions.
- Load center of gravity must not extend past existing fork tips.
- Capacity of lift truck and attachment combination may be less than capacity shown on attachment. Consult lift truck manufacturer.

SPECIFICATIONS

Model Number (Pair)	Extension Length (in.)	Fork Width (in.)	Minimum Fork Length (in.)	Load Center (in.)	Rated Capacity Each (lbs.)	Weight Each (lbs.)
FE4-42	42	4	28	21	1925	25
FE4-48	48	4	32	24	1700	28
FE4-54	54	4	36	27	1500	32
FE4-60	60	4	40	30	1350	35
FE4-63	63	4	42	32	1275	37
FE4-66	66	4	44	33	1225	38
FE4-72	72	4	48	36	1125	42
FE5-42	42	5	28	21	2525	30
FE5-48	48	5	32	24	2200	34
FE5-54	54	5	36	27	1950	38
FE5-60	60	5	40	30	1750	42
FE5-63	63	5	42	32	1675	45
FE5-66	66	5	44	33	1600	47
FE5-72	72	5	48	36	1475	51
FE5-96	96	5	64	48	1100	67
FE6-42	42	6	28	21	3200	36
FE6-48	48	6	32	24	2800	41
FE6-54	54	6	36	27	2500	46
FE6-60	60	6	40	30	2250	51
FE6-63	63	6	42	32	2125	53
FE6-66	66	6	44	33	2025	55
FE6-72	72	6	48	36	1875	60
FE6-96	96	6	64	48	1400	80
FE7-42	42	7	28	21	4000	42
FE7-48	48	7	32	24	3500	48
FE7-54	54	7	36	27	3100	53
FE7-60	60	7	40	30	2800	59
FE7-63	63	7	42	32	2675	62
FE7-66	66	7	44	33	2550	65
FE7-72	72	7	48	36	2325	71
FE7-96	96	7	64	48	1750	94

Model FC - Fork Covers

Caldwell Fork Covers are specifically designed to protect loads which cannot be marred or scratched. Made from durable nylon webbing, these covers are economical and long lasting.



SPECIFICATIONS

Model Number (Pair)	Fork Cover Dimensions (in.)		
	A	B	C
42-1 1/2-4	42	1-1/2	4
48-1 1/2-5	48	1-1/2	5
48-2-6	48	2	6
54-1 1/2-5	54	1-1/2	5
84-4-6	84	4	6

Battery Lifting Beams



The Caldwell Group • 800-628-4263 • www.caldwellinc.com

Lif-Truc™ Section
2011-2013 Master Catalog

Models 36 & 36E - Fiberglass Battery Lifting Beams

Used for applications that require a non-conductive beam such as lifting industrial fork lift truck batteries.

PRODUCT FEATURES:

- Lightweight units — 70% lighter than other beams.
- Models are available for handling batteries of equal length or of different lengths.
- Heavy duty 4,800 lb. and 7,000 lb. capacities.
- Non-conductive fiberglass beam construction.
- Acid-resistant, coated polyester straps and hooks.
- Standard drop sling length is 10", other lengths available upon request.



Model 36 - Fixed (Batteries of Equal Length)

SPECIFICATIONS

Model Number	Rated Capacity (lbs.)	Standard Spread (in.)	Dimensions (in.)						Weight (lbs.)
			A	B	C	D	E	F	
36-2.4	4800	36	5/8	3	6	11	27/32	21/32	16
36-3.5	7000	36	3/4	2-3/4	5-1/2	12	1	1	20

NOTE: For battery beams other than standard spread. Measure distance between lifting points. Specify Model 36 with beam spread (in even inches) equal to length measured.

Model 36E - Adjustable (Batteries of Different Length)

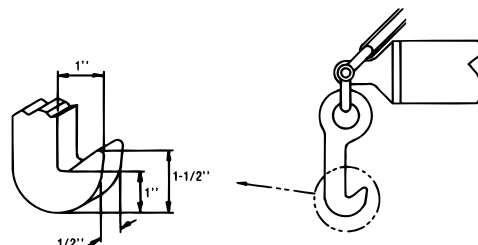
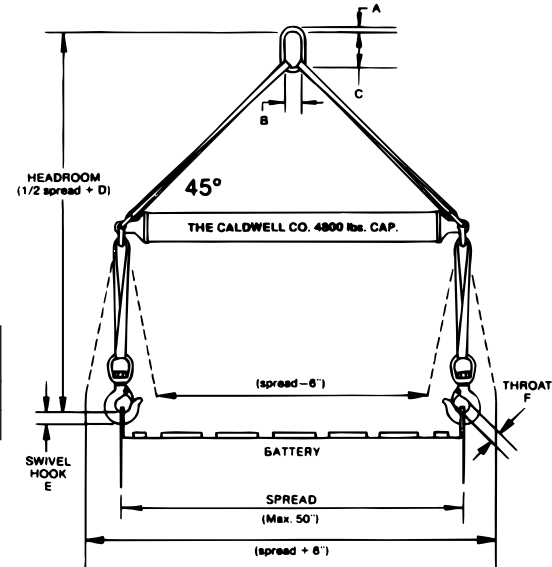
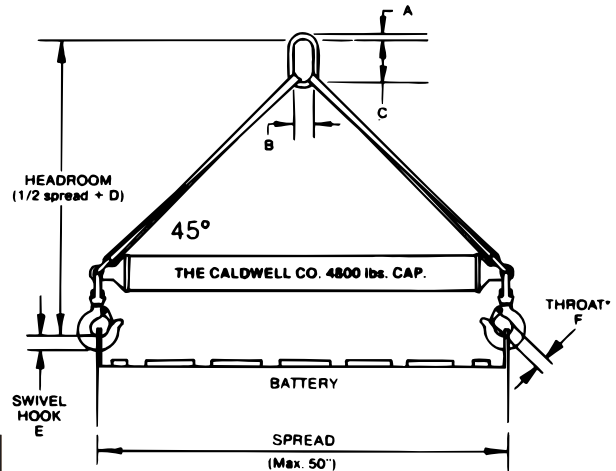
SPECIFICATIONS

Model Number	Rated Capacity (lbs.)	Standard Spread (in.)	Dimensions (in.)						Weight (lbs.)
			A	B	C	D	E	F	
36E-2.4	4800	36	5/8	3	6	21	1	1	17
36E-3.5	7000	36	3/4	2-3/4	5-1/2	22-1/2	1-1/8	1-1/8	20

NOTE: For Model 36E lifting beams, battery length cannot differ more than 6 inches from length of beam spread. For battery beams other than standard spread. Take average of shortest and longest batteries, and specify Model 36E with beam spread (in even inches) equal to average lengths. Battery length must be within 12 inches, shortest to longest.

OPTION J: J-Hooks available in place of swivel hooks at a reduced cost.

NOTE: When ordering J-Hook option show Model 36 as 36J, and Model 36E as 36EJ.



Battery Lifting Beams

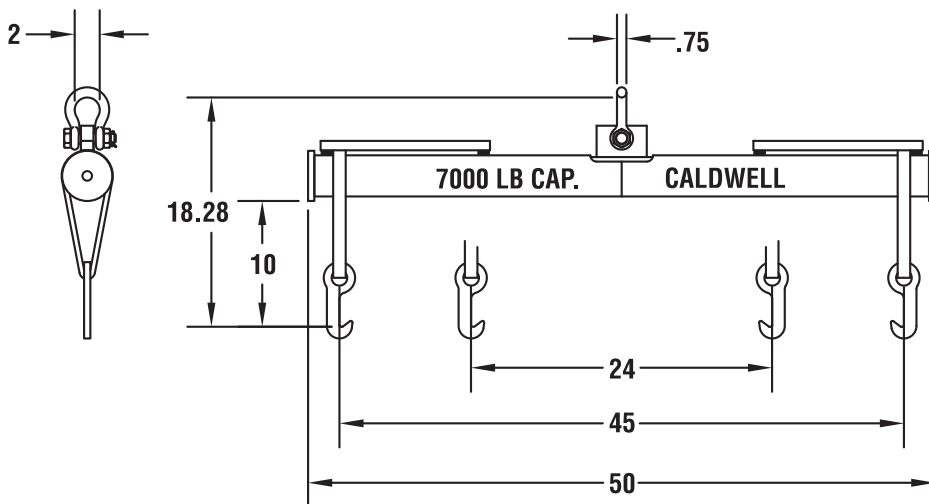
Models 36L - Low Headroom Battery Lifting Beam

PRODUCT FEATURES:

- Low headroom, 18.28".
- Adjustable to handle batteries of different lengths.
- Non-conductive beam.
- Acid-resistant, coated polyester straps with either swivel or J-Hooks.



Unit shown with Option J.



Shown with J-Hooks (Model 36LJ-3.5)

NOTE: Dimensions shown in inches.

SPECIFICATIONS

Model Number	Rated Capacity (lbs.)	Standard Spread (in.)	Weight (lbs.)
36L-3.5	7000	45	110



STANDARD
Swivel Hooks



OPTION J
J-Hooks
Order Model 36LJ-3.5



The Caldwell Group • 800-628-4263 • www.caldwellinc.com

Lit-Truc™ Section
2011-2013 Master Catalog

Special Applications



The Caldwell Group • 800-628-4263 • www.caldwellinc.com

Lif-Truc™ Section
2011-2013 Master Catalog

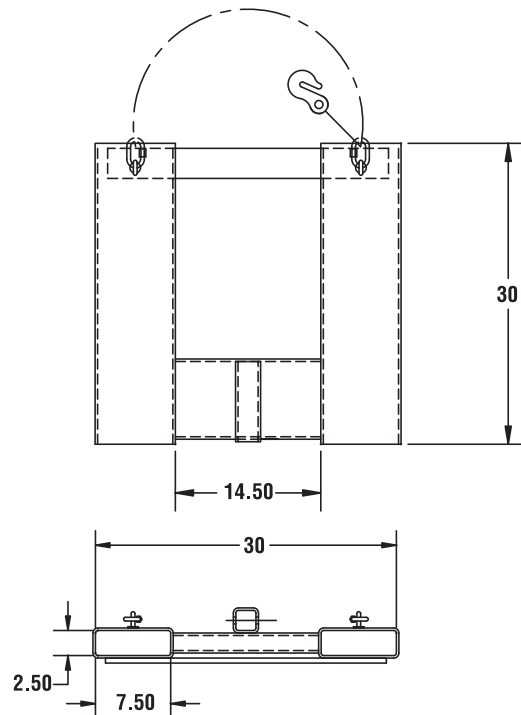
Model SPTR - Trailer Spotter

An inexpensive and fast way to move trailers with your fork lift truck. It quickly attaches to both forks for stable load movement with safety chain and grab hook for added security. Accepts standard 2" hitch inserts designed to handle 1-7/8" to 2-5/16" hitch ball for up to 6,000 pounds gross towing weight, and with the pintle adapter, up to 16,000 pounds gross towing weight.



PRODUCT FEATURES:

- Easily move trailers with a fork lift truck.
- Restraining chain with grab hooks standard.
- Insert restraining pin standard.
- Can be used with most 2" standard inserts.
- Optional hitch insert or pintle adapter are available.



NOTE: Dimensions shown in inches.

SPECIFICATIONS

Model Number	Ball Dia. (in.)	Max. Tongue Wt. (lbs.)	Max. Gross Trailer Wt. (lbs.)	Weight (lbs.)
SPTR-8	1-7/8	600	2000	135
	2		5000	
	2-5/16		6000	
	Pintle	3000	16000	

WARNING

Capacity of lift truck and attachment combination may be less than capacity shown on attachment. Consult lift truck manufacturer.

Options



Shown with optional hitch insert & ball.



Shown with optional pintle adapter.

Special Applications



The Caldwell Group • 800-628-4263 • www.caldwellinc.com

Lit-Truc™ Section
2011-2013 Master Catalog

Model HDTB - Heavy Duty Tow Bar

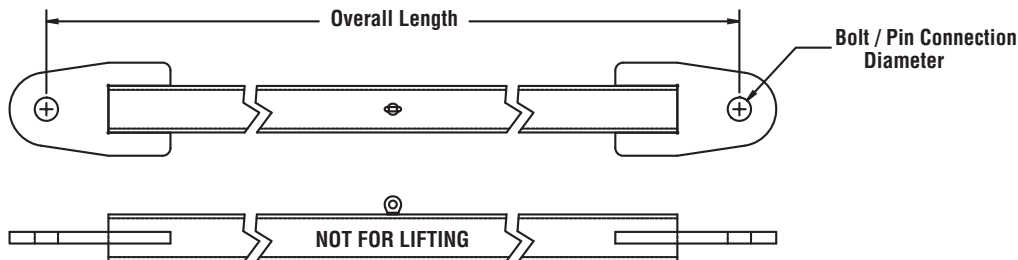
Pulling a heavy load? Caldwell's custom designed tow bar is the solution you need. Our tow bar is a solid connection which provides added control over standard tow chains when moving heavy equipment weighing in at 10, 20, 30 tons or more! Just provide the desired length, capacity, and connection required and we will deliver the solution you need.



PRODUCT FEATURES:

- Can be used to push or pull a load.
- Designed to accommodate your specific connections.
- Custom designed per application.

Application Evaluation



1. Maximum towing capacity (lbs.): _____

Contact: _____

2. Overall length (distance between vehicles): _____

Company: _____

3. Connection type:

Address: _____

☐ Pintle

City, State, Zip: _____

☐ Pin (please provide diameter and length):

Phone: _____

☐ Other (please specify): _____

Fax: _____

Email: _____

4. Other application information: _____

For a price quote on your specific application, please complete the above form and fax to The Caldwell Group at **815-229-5686** or you can complete this form online at www.caldwellinc.com/applications.

Special Applications

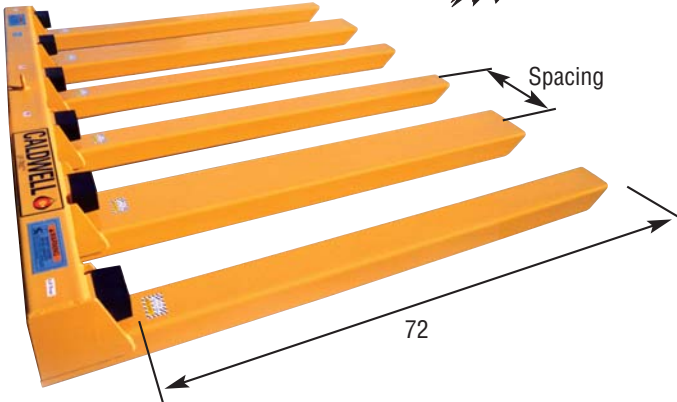


The Caldwell Group • 800-628-4263 • www.caldwellinc.com

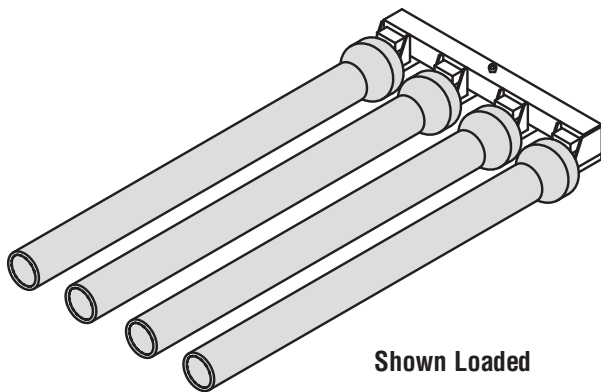
Lif-Truc™ Section
2011-2013 Master Catalog

Model MFL - Multiple Pipe Lifter

Can help you move your concrete pipe up to 3 times faster than with a standard fork truck. Quickly and easily loads up to 6 pipes at a time* onto a flat bed truck. Increased efficiency saves both time and money moving and loading concrete pipe.



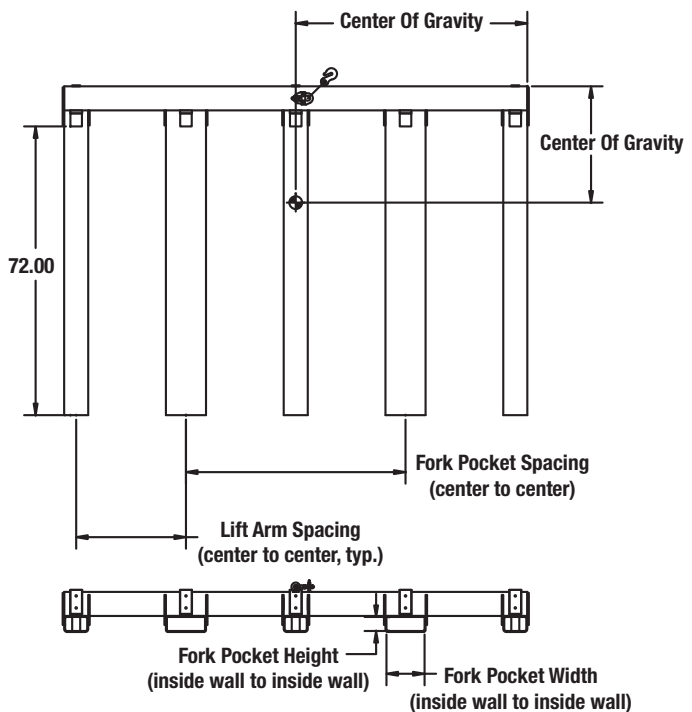
NOTE: Dimensions shown in inches.



Shown Loaded

PRODUCT FEATURES:

- Lifter can pick up 4, 5, or 6 pipes at a time.*
- Save time and money moving and loading concrete pipe.
- Rubber bumpers help protect pipe from damage.
- Heavy duty design.
- Pockets are open for easy cleaning and water drainage.
- Restraining chain with grab hook standard.
- Complies with OSHA requirements.



SPECIFICATIONS

Model Number	Pipe Size I.D. (in.)	Lifting Arms		Fork Pockets (in.)		Max. Load Per Fork (lbs.)	Max. Lifter Capacity (lbs.)	Center of Gravity From Bumper (in.)	Unit Weight (lbs.)
		Qty.	Spacing (in.)	Width x Height	Centers				
MFL-12-4	12	4	20	7.5 x 3.5	20	1200	4800	30.50	650
MFL-12-6	12	6	20	9.5 x 3.5	60	1200	7200	31.00	980
MFL-15-5	15	5	24	9.5 x 3.5	48	1500	7500	30.50	860
MFL-18-5	18	5	27	9.5 x 3.5	54	2000	10000	29.00	860
MFL-21-5	21	5	30	9.5 x 3.5	60	2300	11500	29.00	910

NOTE: Pipe lifter is designed for ASTM C76 bell and spigot pipes with A or B wall thickness.

Other sizes are available, please consult factory.

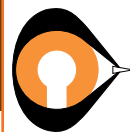
Capacity/load information based off of model's center of gravity from bumper.

* Quantity of lifting arms is the maximum number of pipes that can be handled in a single lift.

WARNING

Capacity of lift truck and attachment combination may be less than capacity shown on attachment. Consult lift truck manufacturer.

Special Applications



The Caldwell Group • 800-628-4263 • www.caldwellinc.com

Lif-Truc™ Section
2011-2013 Master Catalog

Model PP - Porta-Platform



**QUICKSHIP
PROGRAM**

PRODUCT FEATURES:

- Heavy duty 10 gauge diamond plate deck.
- 1,000 pound load capacity.
- 4" toe guards.
- All welded construction.
- 42" side railings.
- Mesh screen 62" or 84" truck side.
- Mast chain included.
- Latch swing gate.
- Painted safety yellow.
- Platform 36" x 36".
- 4 casters standard (2 swivel, 2 rigid).



OPTION A
Tool tray option



OPTION B
Light bulb caddy

SPECIFICATIONS

Model Number	Deck Size (in.) Width x Depth	Height (in.)	Fork Lift Pocket Spacing (in.)	Fork Pockets (in.)	Type Gate	Weight (lbs.)
PP-1	36 x 36	62	16-1/2	2-1/2 x 8	Swing	190
PP-2*	36 x 36	84	16-1/2	2-1/2 x 8	Swing	205

NOTE: Add option(s) to suffix of Model Number. Example: Option A - PP-1A

*Required in California

WARNING

Capacity of lift truck and attachment combination may be less than capacity shown on attachment. Consult lift truck manufacturer.

Model MPP - Pallet Puller



**QUICKSHIP
PROGRAM**

PRODUCT FEATURES:

- Used for moving hard to reach loaded pallets from flat surfaces, such as a truck or loading dock.
- Extends reaching capability of the fork lift truck.
- Single scissor action.
- Heavy duty steel design.
- Not for overhead lifting.
- Working load limit 1,250 pounds.
- 3/8" proof coil chain.

SPECIFICATIONS

Model Number	Jaw Opening (in.)		Chain Length (in.)	Weight (lbs.)
	Max.	Min.		
MPP-1	4.00	1.00	24	14

Special Fork Attachment Application Evaluation



The Caldwell Group • 800-628-4263 • www.caldwellinc.com

Lif-Truc™ Section
2011-2013 Master Catalog

Specify the desired model or style attachment: _____

FORK TRUCK INFORMATION:

Fork Dimensions: Width _____ Thickness _____ Length _____

Fork Spacing (measured from the outside edge of the forks): Minimum _____ Maximum _____

Carriage Class (if carriage mount required.): _____

LOAD INFORMATION:

Product to be handled: _____

Maximum: Weight _____ Length _____ Height _____ Width _____

Minimum: Weight _____ Length _____ Height _____ Width _____

Location of pick up / attachment points: _____

Desired location of attachment points (provide drawing of photo if available.): _____

Does the product have: ☐ Sharp edges / Corners ☐ Protrusions ☐ Obstructions

If so, please describe: _____

Other application information: _____

Contact: _____

Company: _____

Address: _____

City, State, Zip: _____

Phone: _____

Fax: _____

Email: _____

For a price quote on your specific application,
please complete the above form and fax to
The Caldwell Group at **815-229-5686**
or you can complete this form online at
www.caldwellinc.com/applications.



Lif-Truc™ Fork Lift Truck Attachments have been designed for specific tasks to withstand the particular forces imposed. Guidelines for installation, inspection, maintenance and repair, safe operation and operator training of these attachments follow:

INSTALLATION

Caldwell Fork Lift Truck Attachments shall be assembled and installed in accordance with the manufacturer's instructions, unless other specific arrangements have been approved in writing by manufacturer.

OPERATOR TRAINING

Fork lift attachments shall be operated in accordance with manufacturer's instruction manual, and by personnel who have received instructions described in the "Operating Practices" section of these guidelines.

Training shall also include instruction regarding:

1. Details of the operating cycle.
2. Application of the attachment to the load including (according to the manufacturer's instructions) adjustments to the attachment, if any, to adapt it to various sizes and kinds of loads.
3. Instruction in any special operations or precautions that may be required.
4. Recognition of proper load configuration. For example, preferred operation requires an orderly pattern of stacking.
5. Before assuming responsibility for using the attachment, an operator shall demonstrate his understanding of the lifting procedure to the instructor. The instructor should record notes of operator's demonstrated ability.

INSPECTION

The attachment should be visually inspected by or under the direction of an appointed person on a daily or weekly schedule depending on the nature of the attachment and the severity of the service.

Details to look for include but are not limited to:

1. Structural deformation.
2. Cracks in the structural frame, welds, attachment points, mechanically operating parts, any attached slings, clevises and hooks.
3. Malfunctions during operation of a mechanically operating attachment.
4. Loose covers, fasteners and stops.
5. Faulty operation of automatic hold and release mechanisms.
6. Wear of lifting or attachment points, load supporting clevises, pins, slings, linkages and mechanical parts.
7. Missing nameplates and markings. Contact Caldwell for replacements.

MAINTENANCE AND REPAIRS

1. A preventive maintenance program should be established for each attachment by a qualified person based on recommendations made by its manufacturer.
2. Any repairs shall be done by the manufacturer or with instructions and guidance from the manufacturer. If repairs are performed by someone other than the manufacturer a qualified person should have responsibility for repairs. Dated records and details of repairs and parts replacement should be carefully maintained by a qualified person, and copies kept in your possession.
3. Replacement parts shall be at least equivalent to the original manufacturer's specifications.

OPERATING PRACTICES

DO'S

1. The operator shall receive, read and understand the manufacturer's instruction manual.
2. The operator shall watch carefully that the attachment is performing properly during the lifting procedure.
3. The operator shall know the standard crane hand signals.
4. The operator shall only respond to signals from an appointed person. However, stop signals from anyone shall be obeyed.
5. The operator shall notify a designated person when he considers a load to be unsafe.
6. The operator shall inspect the attachments before using. Any defect found shall be examined by a qualified person to determine if it is a hazard.

DON'TS

1. The operator shall not operate a malfunctioning attachment or one with an "out of service" tag attached.
2. The operator shall not use the attachments for any purpose(s) other than those designated by the manufacturer's instruction manual.
3. The operator shall not use an attachment when the capacity, weight or safety markings are missing or are not legible.
4. No one shall make alterations or modifications to attachments without consulting the manufacturer.
5. No one shall obscure or paint over the manufacturer's capacity, weight, or safety markings.
6. Loads shall not be lifted higher than necessary or be left suspended unattended.
7. The attachment shall not lift a load that is not properly balanced for safe lifting.

HANDLING THE LOAD

1. The attachment shall not be loaded in excess of its rated load.
2. Ensure the load can withstand forces applied by the lifter.
3. The combined weight of the attachment and load shall not exceed the rated load of the fork lift when load center and lost load is considered. (See fork lift manufacturer's information).
4. The attachment shall be applied to the load in accordance with the manufacturer's recommended operating procedure.
5. Attachment chains shall not be kinked, and multiple part lines shall not be twisted about each other.
6. The attachment shall not touch obstructions during load movement.
7. The attachment shall not be loaded with loose material that might fall during movement.
8. The operator or other personnel shall not place themselves or any part of their bodies beneath suspended loads.
9. The load or attachment shall not be slid on the floor or other surface.
10. The attachment shall not be used for loads for which it is not designed.
11. Do not attempt to reposition load when raised.
12. A preliminary lift of a few inches shall be made to establish that the load is stable.
13. All loads shall be accelerated and decelerated smoothly and slowly. This applies to both mast movement and fork lift movement.

Modifications or repairs performed on your lifting equipment without prior written approval from The Caldwell Group, Inc. voids your warranty. Refer to ASME standards for information regarding the liability of repaired or modified lifters.



The Caldwell Group • 800-628-4263 • www.caldwellinc.com

**Lif-Truc™ Section
2011-2013 Master Catalog**