

# Coil Lifters & Upenders



The Caldwell Group • 800-628-4263 • www.caldwellinc.com

Strong-Bac® Section  
2011-2013 Master Catalog

## Model 82 - Heavy Duty C-Hook

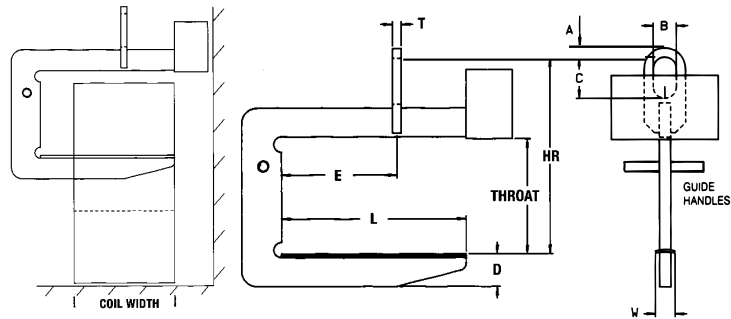


### PRODUCT FEATURES:

- Designed for heavy duty applications.
- High tensile alloy steel plate reduces physical size and weight.
- Counter balanced to hang level when empty.
- Inside radius on hooks avoid coil edge contact.
- Curved coil saddle is standard.
- Guide handles for ease of hook positioning.
- Handles a wide range of coil widths.
- Available with optional padding for additional coil protection.
- Complies with ASME standards.

**WARNING**  
Center of the hoist and bail must be in-line with the load's center of gravity.

**QUICKSHIP PROGRAM**



NOTE: E = Maximum coil width ÷ 2

### SPECIFICATIONS

Model Number	Capacity (tons)	Dimensions (inches)											(lbs.)
		Coil Width		Length Throat	Lifting Arm			Headroom	Bail Dimensions			Weight T	
		Max.	Min.		Depth L	Width D	HR W		Opening A	B	Thk. C		
82-5-36	5	36	24	24	30	5-5/16	4	37-3/8	1-1/2	4	7	1-1/4	420
82-5-48		48	30	24	39	6-1/8	4	38	1-1/2	4	7	1-1/4	584
82-5-60		60	36	24	48	6-9/16	4	38-1/2	1-1/2	4	7	1-1/4	680
82-7 1/2-36	7-1/2	36	24	24	30	5-5/8	4	37-1/2	1-1/2	4	7	1-1/2	615
82-7 1/2-48		48	30	24	39	6-5/16	4	38-1/4	1-1/2	4	7	1-1/2	774
82-7 1/2-60		60	36	24	48	6-15/16	4	39	1-1/2	4	7	1-1/2	942
82-10-48	10	48	30	24	39	7-1/4	4	41-1/4	2	5	9	1-3/4	928
82-10-60		60	36	24	48	7-1/2	4	41-3/8	2	5	9	1-3/4	1295
82-10-72		72	42	24	57	7-1/4	4	42-1/2	2	5	9	1-3/4	1616
82-15-48	15	48	30	30	39	7-1/4	4	47-7/8	2	5	9	1-3/4	1450
82-15-60		60	36	30	48	8	4	48	2	5	9	1-3/4	1824
82-15-72		72	42	30	57	8-3/4	4	48-3/4	2	5	9	1-3/4	2227
82-20-60	20	60	36	30	48	9-1/8	4	52-1/8	2-1/4	6	12	2	2175
82-20-72		72	42	30	57	10	4	52-5/16	2-1/4	6	12	2	2625
82-25-60	25	60	36	34	48	9	4	57-3/4	2-1/2	6	14	2-1/4	2820
82-25-72		72	42	34	57	9-3/4	4	58-1/2	2-1/2	6	14	2-1/4	3570
82-30-60	30	60	36	34	48	9-7/8	4	58-3/4	2-3/4	6	14	2-1/2	3180
82-30-72		72	42	34	57	10-5/8	4	59-3/8	2-3/4	6	14	2-1/2	3800
82-40-72	40	72	42	38	57	11	5	68	3-1/4	7	18	3	5350
82-50-84	50	84	48	40	64-1/2	13	6	71-7/8	3-3/4	7	18	3	7470

Other sizes available, consult factory.