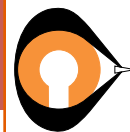


# Special Applications



## Model LL - "Corky" Container Lifting Lug

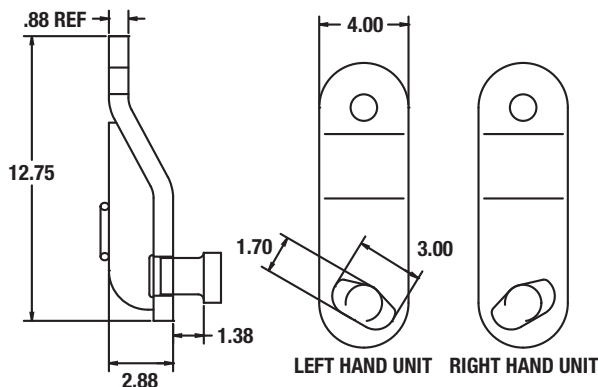


Patent No. 4,541,662

### PRODUCT FEATURES:

- An efficient way to lift containers from bottom lifting slot.
- Handle indicator shows lug is engaged for lift.
- Complies to use with ASME B30.9 sling capacities.

**OPTION S** - 8 1/2 ton shackle



### SPECIFICATIONS

Model Number	Rated Capacity Each (tons)	Weight (lbs.)
LL	8 1/2	17

**NOTE:** Specify complete set of 4 (2R & 2L) or individual pieces by L (left) or R (right).

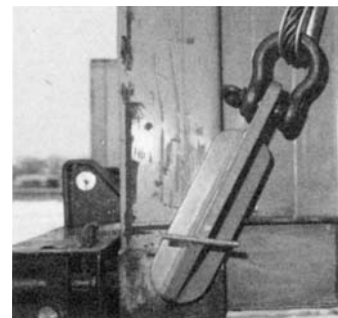
## Operation



Align "Corky" Hook with cargo container lift fitting.

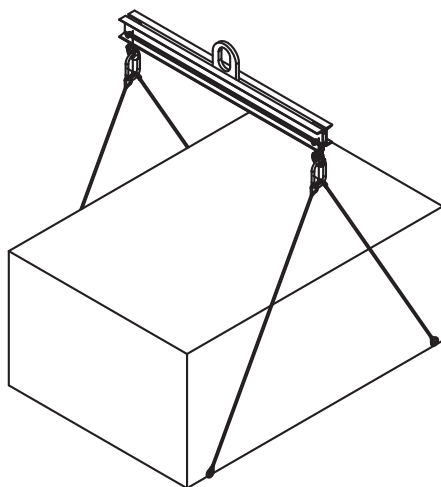


Insert "Corky" Hook into the lift fitting slot.



Apply tension to the choker cable. Indicator shows lug in locked position.

## Container Lifting Assemblies with "Corky" Hooks



Representative of configuration only.

### Model CLS - Standard Wire Rope

Use in lifts where the load center is positioned in the center of the container.

Model Number	Use With
CLS-20	20-ft. container
CLS-40	40-ft. container

### Model CLS - Adjust-A-Leg®

Use in lifts where the load center is positioned away from the center of the container.

Model Number	Use With
CLS-24	20-ft. container
CLS-44	40-ft. container